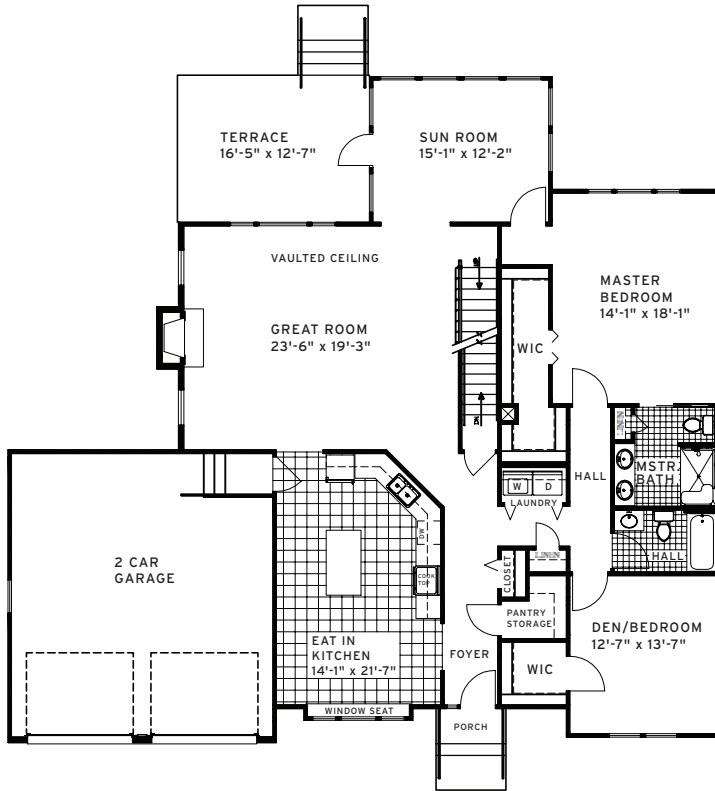
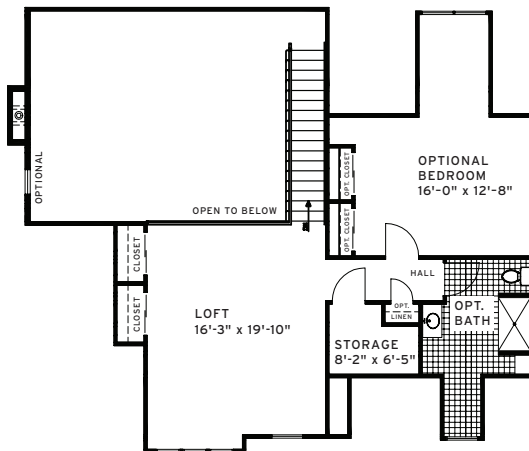


— The Ash —

3 BEDROOM & 3 BATH WITH LOFT - 2,837 SQ. FT.



FIRST FLOOR



SECOND FLOOR

SPECIAL UPGRADES INCLUDED IN ENTRANCE FEE FOR THIS MODEL HOME!

- Full basement
- Ceramic tile floor - kitchen and foyer
- Custom paver terrace overlooking creek
- 42" maple kitchen cabinets
- Tile backsplash - kitchen
- Custom walk-in foyer closet
- Stainless steel kitchen appliances
- Granite kitchen countertops
- Better quality carpet & padding throughout
- Custom-finish cultured stone bathroom vanity tops
- Custom closet - Master bedroom
- Elaborate, professionally-designed landscaping package with shrubs, trees, and perennials

PLUS ALL THESE STANDARD FEATURES:

- All season sunroom
- Gas fireplace in great room
- Ceramic tile floors and shower surround in master and first floor baths
- GE kitchen appliance package
- Raised height, water conserving low flush toilets
- Attractive *Cedar Impressions* maintenance-free vinyl siding
- Two-car garage with carriage-style doors and automatic openers
- Andersen white double-hung windows and "Frenchwood" patio doors
- Energy features that meet or exceed industry standards for energy efficient construction
- Outdoor terrace
- Sodded front, side and rear lawns with underground sprinkler system
- Monitor-ready security system